

ROOM 13™

EST.



2013

COLLECTION

HOMECOMING

COLLECTION

TEXTILES AND WALLPAPER

HOME COMING

The 'Homecoming Collection' pays homage to our family roots and more specifically, to the home of our childhood. This house nurtured our creative appetites and eventually was the house that incubated our Room 13 design business in its infant years.

It was the auditorium to our recitals and dance concerts and where we laid out fairy feasts at the foot of the enchanted tree in our garden. Within the comfort of its walls we were free to fantasize, draw and play. It was the center of our world for 25 years...

Our mom decorated the house from top to bottom. It was so spectacular that it needed to be seen and experienced by all. So she turned our house into a Guest House, called Welgelegen.

For 10 years we helped to (reluctantly) answer phones and check in guests until it was sold in 2005.

At the end of 2017 the new owners of Welgelegen commissioned our mom to decorate its 14 rooms and communal spaces.



Her first task was coincidentally to overhaul the thirteenth room - our old office. She proposed to use our fabrics and wallpaper for this revamp. The owners were charmed with our designs and our connection to the house and requested her to complete the refurbishment using our fabrics.

As this perfect project crossed our path, the pieces started to fall together, and the 'Homecoming Collection' was developed. This range juxtaposes fantasy botanicals against bold geometrics and intricate filigrees.

As designers we are continuously hunting and gathering inspiration and ideas, searching for a common thread amongst the clutter from which to build a cohesive range. This range represents the fantasy and rhythm of this magical house with its big spirit. It encompasses a nostalgic trip down memory lane that has captured the essence of our happy childhood.

This project has been as close to home as it gets.. Full circle. Our homecoming.

*Love,
Nina Berolsky & Michelle van Reenen*





Ambrosia

Colourways: *Natural (Left) /Charcoal/Mono*



'Ambrosia' meaning "food of the gods" is a design composed of edible botanicals: artichokes, star anise, pomegranates, string beans, a variety of herbs, a partridge and a few speckled eggs - reminiscent of De Oude Meester still life paintings.

SPECIFICATIONS

REPEAT:	V:64cm H:64cm
COMPOSITION:	100% COTTON or 100% LINEN
WIDTH:	146cm COTTON or 175cm LINEN
MASS:	COTTON: 265 GSM /RUBS: 35 000 LINEN: 245 GSM /RUBS: 25 000
USES:	UPHOLSTERY, CURTAINING, SOFT FURNISHING WALLPAPER
CARE:	COLD HANDWASH, GENTLE DETERGENT, LINE DRY
ORDER:	MINIMUM TOTAL ORDER OF 3m



Botanical

Colourways: Steel / Chalk



The Botanical design is made up of floral clusters consisting mostly of found botanical illustrations created by our muse, the 19th Century biologist, artist and illustrator, Ernst Haeckel.

SPECIFICATIONS

REPEAT:	V:85cm H:65cm
COMPOSITION:	100% COTTON or 100% LINEN
WIDTH:	146cm COTTON or 175cm LINEN
MASS:	COTTON: 265 GSM /RUBS: 35 000 LINEN: 245 GSM /RUBS: 25 000
USES:	UPHOLSTERY, CURTAINING, SOFT FURNISHING WALLPAPER
CARE:	COLD HANDWASH, GENTLE DETERGENT, LINE DRY
ORDER:	MINIMUM TOTAL ORDER OF 3m



Aphrodite

Colourways: Chalk (shown left as wallpaper)

Chinese Mint / Olive / Steel



*Named after Aphrodite, the greek goddess of immense beauty:” Aphrodite is about lust and
gluttony – the only two sins worth committing, in my opinion.” – Isabel Allende.*

*Because of its strikingly bold and nostalgic colours, ‘Aphrodite’ works well as a feature
fabric, perfect for a statement chair or wallpaper..*

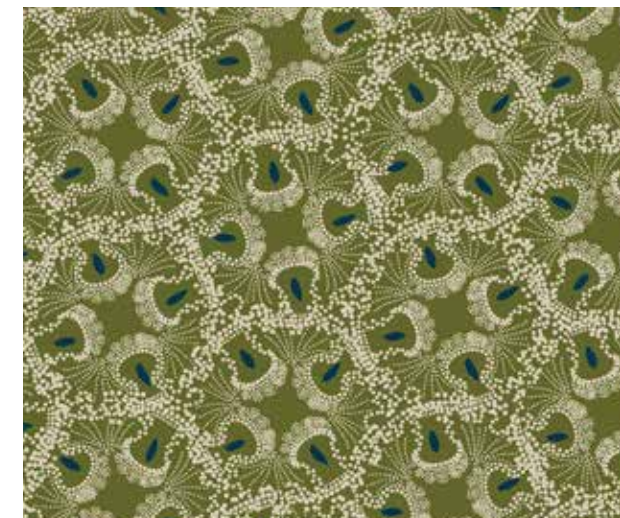
SPECIFICATIONS

REPEAT:	V:45cm H:45cm
COMPOSITION:	100% COTTON or 100% LINEN
WIDTH:	146cm COTTON or 175cm LINEN
MASS:	COTTON: 265 GSM /RUBS: 35 000 LINEN: 245 GSM /RUBS: 25 000
USES:	UPHOLSTERY, CURTAINING, SOFT FURNISHING WALLPAPER
CARE:	COLD HANDWASH, GENTLE DETERGENT, LINE DRY
ORDER:	MINIMUM TOTAL ORDER OF 3m



Pomegranate

Colourways: Dark Aqua / Green



These delicate shapes have been extracted off our Eden design. The design is made up of tiny little cells, creating a pomegranate seed-like structure. The result can be compared to an intricate lace pattern.

SPECIFICATIONS

REPEAT:	N/A
COMPOSITION:	100% COTTON or 100% LINEN
WIDTH:	146cm COTTON or 175cm LINEN
MASS:	COTTON: 265 GSM /RUBS: 35 000 LINEN: 245 GSM /RUBS: 25 000
USES:	UPHOLSTERY, CURTAINING, SOFT FURNISHING WALLPAPER
CARE:	COLD HANDWASH, GENTLE DETERGENT, LINE DRY
ORDER:	MINIMUM TOTAL ORDER OF 3m



Eden

Colourway: Navy



*Named after the garden of Eden, an unspoilt Paradise.
Florals are juxtaposed with white triangular and circular dotted shapes,
adding raw texture to the design.*

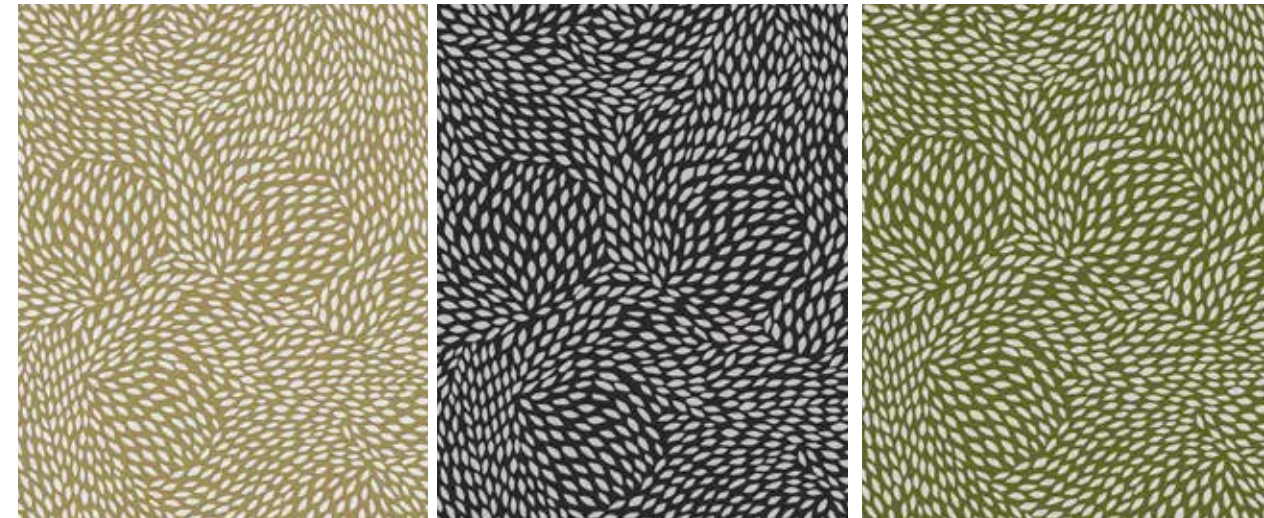
SPECIFICATIONS

REPEAT:	V:64cm H:64cm
COMPOSITION:	100% COTTON or 100% LINEN
WIDTH:	146cm COTTON or 175cm LINEN
MASS:	COTTON: 265 GSM /RUBS: 35 000 LINEN: 245 GSM /RUBS: 25 000
USES:	UPHOLSTERY, CURTAINING, SOFT FURNISHING WALLPAPER
CARE:	COLD HANDWASH, GENTLE DETERGENT, LINE DRY
ORDER:	MINIMUM TOTAL ORDER OF 3m



Speckle

Colourways: Wheat / Coal/ Green



'Speckle' integrates seamlessly with all our botanicals. It creates a beautiful "fur-like" illusion, adding texture and movement to the fabric.

SPECIFICATIONS

REPEAT:	N/A
COMPOSITION:	100% COTTON or 100% LINEN
WIDTH:	146cm COTTON or 175cm LINEN
MASS:	COTTON: 265 GSM /RUBS: 35 000 LINEN: 245 GSM /RUBS: 25 000
USES:	UPHOLSTERY, CURTAINING, SOFT FURNISHING WALLPAPER
CARE:	COLD HANDWASH, GENTLE DETERGENT, LINE DRY
ORDER:	MINIMUM TOTAL ORDER OF 3m



Antheia

Colourways: Blush (Left - printed on linen)

Charcoal / Canary / Blue



Named after 'Antheia', the Greek Goddess of flowers. A combination of vintage botanical drawings are rearranged into unusual looking flower bouquets on colourful backgrounds.

The result is a collage that bursts with flamboyant colour and energy.

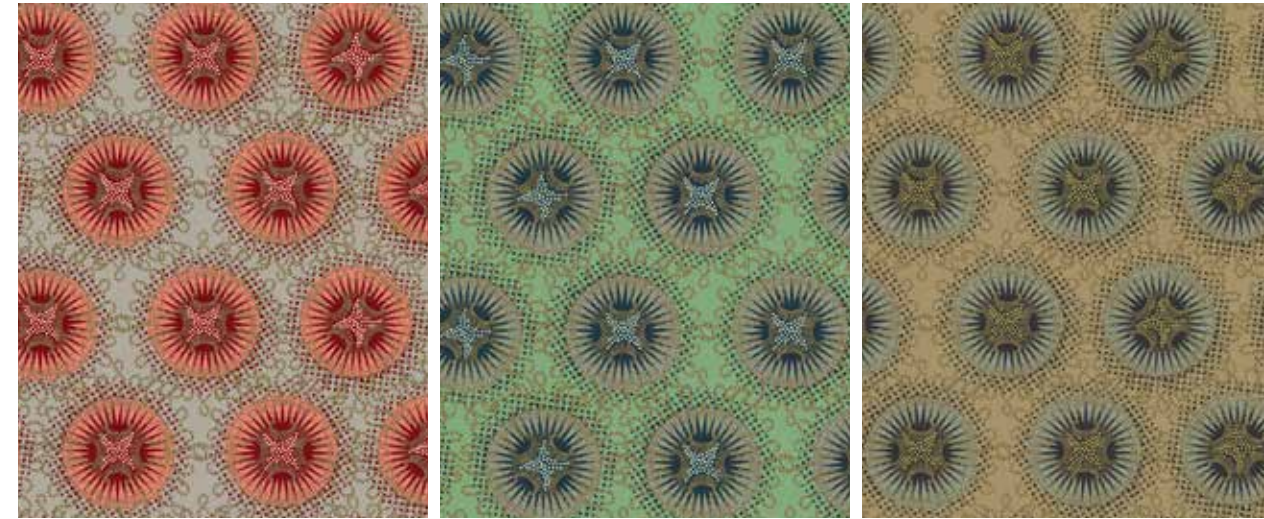
SPECIFICATIONS

REPEAT:	V:55cm H:55cm
COMPOSITION:	100% COTTON or 100% LINEN
WIDTH:	146cm COTTON or 175cm LINEN
MASS:	COTTON: 265 GSM /RUBS: 35 000 LINEN: 245 GSM /RUBS: 25 000
USES:	UPHOLSTERY, CURTAINING, SOFT FURNISHING WALLPAPER
CARE:	COLD HANDWASH, GENTLE DETERGENT, LINE DRY
ORDER:	MINIMUM TOTAL ORDER OF 3m



Cellular

Colourways: *Blush / Chinese Mint / Gold*



'Cellular' is a repeat of a shape found in our 'Eden' and 'Aphrodite' botanical designs. Named 'Cellular' for its intricate and ordered cell-like structures, compartments and cavities. The result is reminiscent of the timeless traditional shweshwe fabrics.

SPECIFICATIONS

REPEAT:	V:38cm H:32cm
COMPOSITION:	100% COTTON or 100% LINEN
WIDTH:	146cm COTTON or 175cm LINEN
MASS:	COTTON: 265 GSM /RUBS: 35 000 LINEN: 245 GSM /RUBS: 25 000
USES:	UPHOLSTERY, CURTAINING, SOFT FURNISHING WALLPAPER
CARE:	COLD HANDWASH, GENTLE DETERGENT, LINE DRY
ORDER:	MINIMUM TOTAL ORDER OF 3m



Labyrinth

Colourway: Beige



*Intricate shoots and opiates interweave with rare flowers and flying insects.
The tension between beauty and vulnerability suggests
healing through transformation..*

SPECIFICATIONS

REPEAT:	V:60cm H:60cm
COMPOSITION:	100% COTTON or 100% LINEN
WIDTH:	146cm COTTON or 175cm LINEN
MASS:	COTTON: 265 GSM /RUBS: 35 000 LINEN: 245 GSM /RUBS: 25 000
USES:	UPHOLSTERY, CURTAINING, SOFT FURNISHING WALLPAPER
CARE:	COLD HANDWASH, GENTLE DETERGENT, LINE DRY
ORDER:	MINIMUM TOTAL ORDER OF 3m



Firefish

Colourways: Yellow / Mono / Coral



This pattern has been extracted from the 'Aphrodite' floral design, but now resembles the feather-like fins of a fire fish. 'Fire Fish' is a heavily textured design that follows the popular camouflage and animal print perennial trends.

SPECIFICATIONS

REPEAT:	N/A
COMPOSITION:	100% COTTON or 100% LINEN
WIDTH:	146cm COTTON or 175cm LINEN
MASS:	COTTON: 265 GSM /RUBS: 35 000 LINEN: 245 GSM /RUBS: 25 000
USES:	UPHOLSTERY, CURTAINING, SOFT FURNISHING WALLPAPER
CARE:	COLD HANDWASH, GENTLE DETERGENT, LINE DRY
ORDER:	MINIMUM TOTAL ORDER OF 3m



Apache Large

Colourways: Coal / Coral / Chinest Mint



*'Apache Large' is the perfect geometric accompaniment to our floral designs.
A bold and graphic statement in a fearless range of colours.*

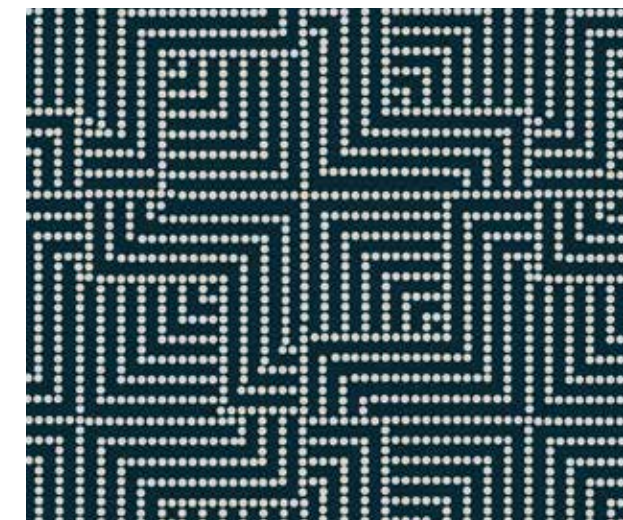
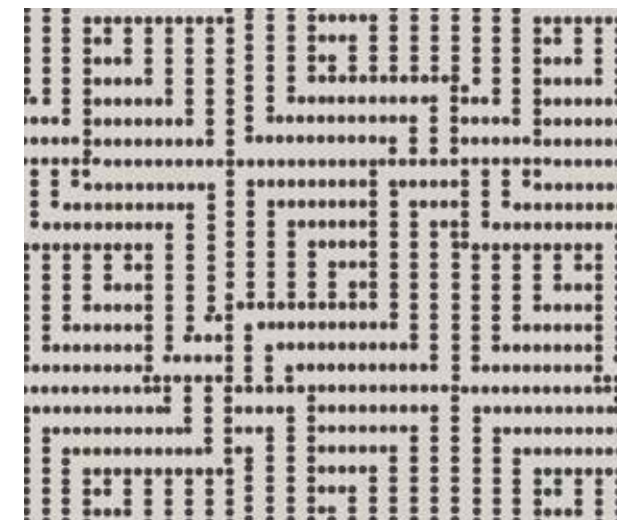
SPECIFICATIONS

REPEAT:	V:64cm H:64cm
COMPOSITION:	100% COTTON or 100% LINEN
WIDTH:	146cm COTTON or 175cm LINEN
MASS:	COTTON: 265 GSM /RUBS: 35 000 LINEN: 245 GSM /RUBS: 25 000
USES:	UPHOLSTERY, CURTAINING, SOFT FURNISHING WALLPAPER
CARE:	COLD HANDWASH, GENTLE DETERGENT, LINE DRY
ORDER:	MINIMUM TOTAL ORDER OF 3m



Maze

Colourways: Grey / Navy



'Maze' is a subtle geometric dotted pattern of interlocking squares creating the illusion of a maze viewed from above. This design is perfectly suited for spaces that require an understated but effective textural touch.

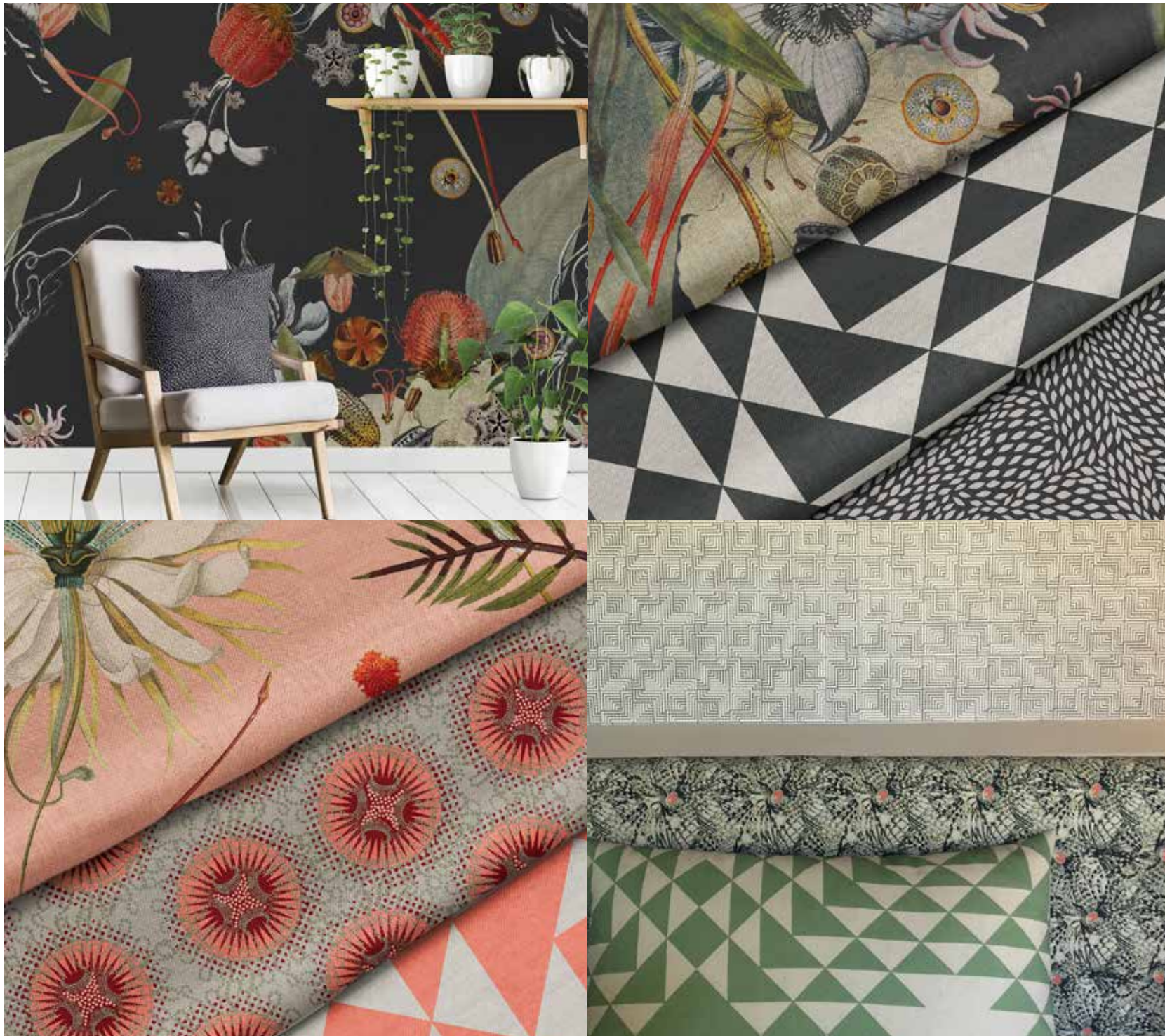
SPECIFICATIONS

REPEAT:	N/A
COMPOSITION:	100% COTTON or 100% LINEN
WIDTH:	146cm COTTON or 175cm LINEN
MASS:	COTTON: 265 GSM /RUBS: 35 000 LINEN: 245 GSM /RUBS: 25 000
USES:	UPHOLSTERY, CURTAINING, SOFT FURNISHING WALLPAPER
CARE:	COLD HANDWASH, GENTLE DETERGENT, LINE DRY
ORDER:	MINIMUM TOTAL ORDER OF 3m



LIGHT AND FLORAL

Plants and botanicals blur the borders between interior and exterior spaces. This trend has been on the rise for the last few years, with more people filling their homes with plants and botanicals in a bid to counteract our urban lives. There is a need to bring the outdoors inside as our connection to nature grows stronger.



BOLD PAIRINGS

The use of combining geometric shapes and bold colour is on the rise and we're seeing them collide in fun and contemporary ways. This look definitely has an adventurous feel and is ideal for spaces where you would like to make a bold statement.



MONOTONES

Our monotone textiles can be paired together in a multiple number of ways for a subtle and softer look. Or mix them up with any of our bolder more colourful designs to bring texture and tranquility to your combinations.



H O M E C O M I N G

COLLECTION

TEXTILES AND WALLPAPER

*All fabrics are made to order. All designs are also available as wallpaper.
Please allow between 5-15 working days for delivery. Minimum total order of 3m.*

Follow Us On:  @roomthirteencollection  Room13Design

Contact Michelle on 073 213 5559 email: hello@room13collection.co.za www.room13collection.co.za